

Product Specifications

X-ERT APS205 Surface Mount Anchor (Kit)

X-ERT

The **X-ERT APS205** Energy Absorbing Surface Mount Anchor (Kit) is a permanent anchor point designed for use either as a single person or 2 person anchor, utilizing a harness and lanyard assembly.

The 21kN anchor point incorporates an energy absorbing swivel eye attachment point for a harness/lanyard assembly to be attached to. This provides uniform energy distribution to the anchor plate allowing fixture to lighter structures and roof decks.

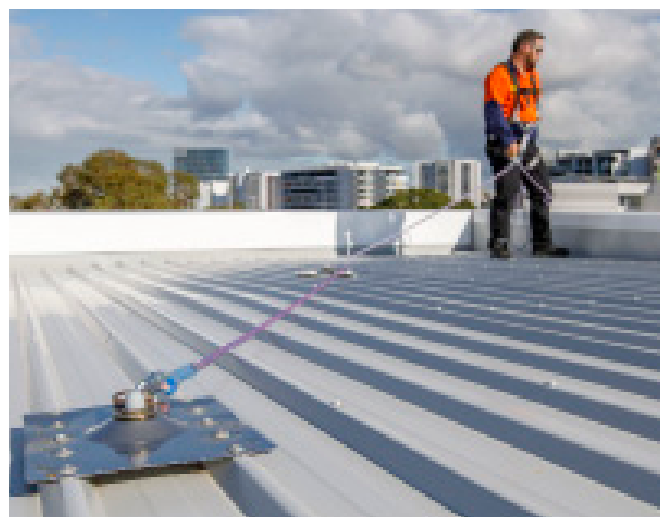
The location of the anchor point(s) and the installation must be carried out by a competent person in accordance with the manufacturer's recommendations.

- Pre-assembled for fast, efficient installation
- Low aesthetic profile to reduce visual impact
- Designed to suit a wide range of roof profiles
- Energy absorbing feature to reduce energy dissipation in the event of a fall

Applications:

- Safe access to roof areas for roof or gutter cleaning, air conditioning, ventilation or dust/fume extractor maintenance
- Safe access while installing or maintaining equipment near a fall zone

WARNING: Read the entire installation manual before installing any of Safemaster products. Alterations, misuse or failure to follow all warnings and instruction may result in serious injury or death. It is the users sole responsibility to ensure that the product is suitable for the application. Safemaster Safety Products takes no responsibility for any damages due to inappropriately used products.



Safemaster[®]
SAFETY PRODUCTS PTY LTD



CONSULTATION



DESIGN



MANUFACTURE



SUPPLY



INSTALLATION



CERTIFICATION

www.safemaster.net.au
(08) 6243 3111 / info@safemaster.net.au

X-ERT APS205 Surface Mount Anchor (Kit)

TECHNICAL SPECIFICATIONS

Material	<ul style="list-style-type: none">Base Plate- Stainless Steel 316 gradeSwivel Anchorage- Stainless Steel 316 grade
Dimensions	<ul style="list-style-type: none">Length- 350mmWidth- 280mmAssembled Height- 40mmAlso available in large plate 350x374x40mm (LxWxH) to suit sandwich panel (Code: APS205-B)
Weight	<ul style="list-style-type: none">1.3kg (APS205)1.6kg (APS205-B)
Working Load Limit	<p>One person- 15kN Two people- 21kN</p> <ul style="list-style-type: none">Support structure integrity, suitability and fixing method to be assessed and determined by a competent person prior to installationX-ERT APS205 Anchor must be used in conjunction with an approved harness and ropeline/ lanyard system incorporating an energy absorber where required
Fixing Details	<ul style="list-style-type: none">Based on the structure of the roof and the roof sheeting, fixing method will be determined by engineered testingThe roof sheet which the X-ERT APS205 is attached to, must be secured to at least 3 purlins/battens <p>Note: Neoprene tape must be used between the X-ERT APS205 and the roof sheet</p>
Compliance	THE X-ERT APS205 conforms to the strength requirements given in Australian Standards AS/ NZS1891.4 section 3.1, and relevant OHS Regulations and Codes of Practice

Testing	Testing based on requirements of Australian Standards AS/NZS 1891.4. <ul style="list-style-type: none">Dynamic Load Test- 2person- 21kNLoad Applied to Structure- 11kN (approximately)
Warranty	5 years from date of purchase subject to correct installation, use and maintenance.
Life of Product	According to Australian Standards AS/NZS1891.4 the life of any height safety product is 10 years.
Inspection and Maintenance	Inspection and Certification of product is required every 12 months by a competent person according to Australian Standards AS/NZS1891.

Safemaster[®]
SAFETY PRODUCTS PTY LTD