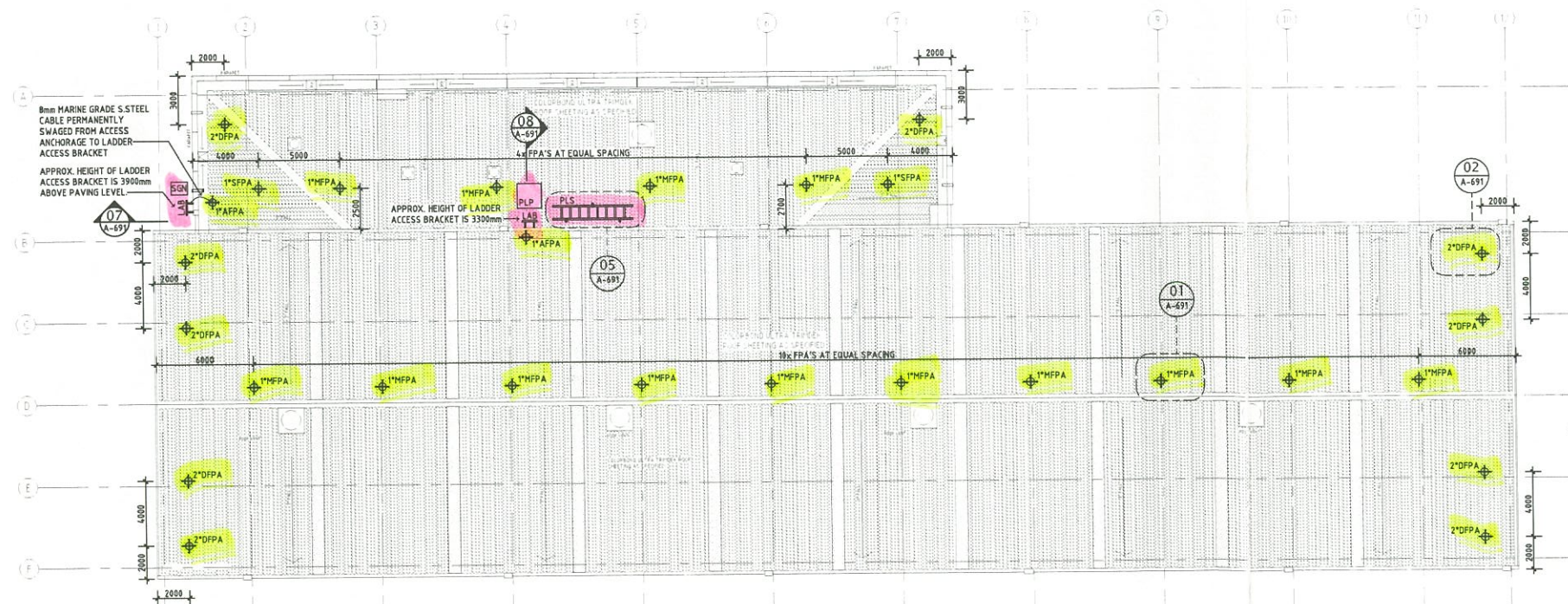
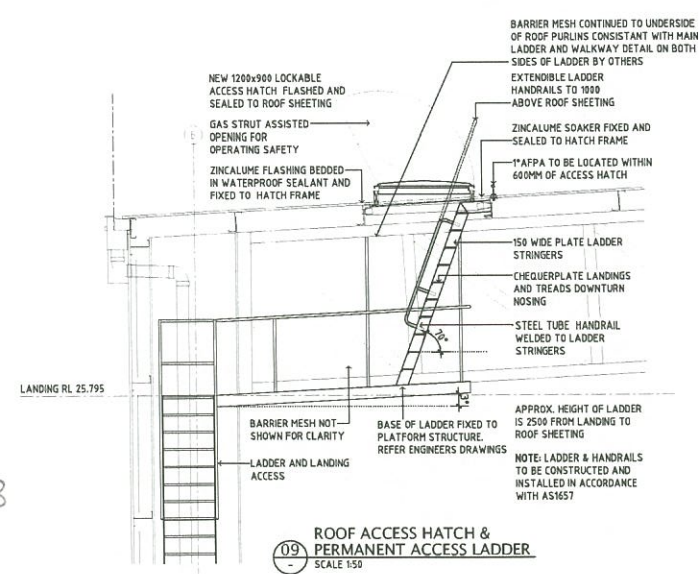


MAINTENANCE FACILITY ROOF PLAN F.I.P.S. LAYOUT
Scale 1:200



WAREHOUSE ROOF PLAN F.I.P.S. LAYOUT
Scale 1:200



No	DATE	REVISION RECORD	DRN	REC	APP
E	31.07.07	ISSUED FOR TENDER	DL	-	-

HEIGHT SAFETY CONSULTANT
Safetylink
RISK MANAGEMENT
T: (08) 9287 4230 F: (08) 9287 4220
P: Unit 2/454 Roberts Road Subiaco W.A. 6008
E: admin@safetylinkmc.com.au
W: www.safetylinkmc.com.au
ABN: 86 075 537 576

CONSULTANT
HASSELL LIMITED ACN 097 711 435
PODIUM LEVEL CENTRAL PARK, 152-158 ST GEORGES TCE.
PERTH WA AUSTRALIA 6000
PERTH@HASSELL.COM.AU
T 61 8 9286 8500 F 61 8 9322 2330

HASSELL

SUBMARINE MAINTENANCE
FACILITY
HENDERSON WA

DRAWING TITLE
MAINTENANCE FACILITY & WAREHOUSE
FALL INJURY PREVENTION SYSTEM
ROOF PLANS & DETAILS

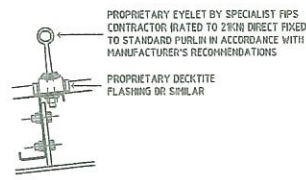


WorleyParsons
Projects
INDUSTRIAL & INFRASTRUCTURE
LEVEL 6 QV1 250 St Georges Terrace
Perth Western Australia 6000
Telephone +61 (08) 9278 8111
Facsimile +61 (08) 9278 8110
Web: www.worley.com.au
WorleyParsons Services Pty Ltd
ABN 61 001 279 812

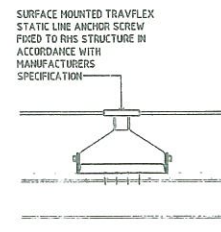
APPROVED	DES	BS
DATE	DRN	DL
SCALE	CKD	RC
SCALE	1:200 & 1:50	A1
DWG NO	302-10812-A-690	REV
		E



01 MULTI FALL PREVENTION ANCHOR
SCALE 1:10



02 SINGLE/ACCESS/DIVISION
FALL PREVENTION ANCHOR
SCALE 1:10



03 HORIZONTAL STATIC LINE
SCALE 1:10

SPECIFICATION

Contractor to supply, install and commission the following items comprising the Height Safety Access System, as detailed in the following Schedule of Materials and the Drawings, which are to be read in conjunction with the General Notes and the Legend.

SCHEDULE OF MATERIALS

Building Sections	FPA	HSL	LAB	PAL	PLP	RAH	SGN	PLS	LAN
Maintenance	62	-	-	1	-	1	2	-	-
Warehouse	28	-	2	-	1	-	1	1	1
Access Bridge	2	1	-	-	-	-	1	-	-
Guard House	11	-	1	-	-	-	1	-	-
Subtotal	103	1	4	1	1	1	5	1	1

Fall Prevention Anchorage (FPA)

All Fall Injury Prevention Anchorage (FPA) to comply with AS/NZS 1891 (set) and be installed in accordance with manufacturer's instructions. All Multi Fall Prevention Anchorage (MFPA) to be capable of withstanding a force of 21kN (2400kg) in the direction of load without failing, and must be suitable for attachment of temporary static line and personal lanyard assembly. All Single/Access/Division Fall Prevention Anchorage (SFPA, APFA, or DFPA) to be capable of withstanding a force of 21kN (2100kg) in the direction of load without failing, and must be suitable for attachment of personal lanyard assembly. Nominated subcontractor to provide details of proposed proprietary product prior to fabrication or installation for approval by height safety consultant.

Horizontal Static Lines (HSL)

All Horizontal Static Lines (HSL) to comply with AS/NZS 1891 (set) and be installed in accordance with manufacturer's instructions. All Primary End Fall Prevention Anchorage (EPFA) to accommodate 24kN load and all Primary Intermediate Fall Prevention Anchorage (IFPA) to accommodate 12kN load. Nominated subcontractor to provide details of proposed proprietary product prior to fabrication or installation for approval by height safety consultant.

Permanent Ladder Access Bracket (LAB)

Permanent Ladder Access Brackets (LAB) are to be used in association with temporary ladders in accordance with AS 1892 (set). The Ladder Bracket is to prevent movement of the top of the ladder in all planes and resist damage to materials and finishes. The Bracket design must be appropriate for fixing to existing structure and ensure temporary ladder in position safe from new roof and fascia below. All LAB to have APFA within 600mm to allow attachment prior to egress. Nominated subcontractor to provide details of proposed proprietary product prior to fabrication or installation for approval by height safety consultant.

Permanent Access Ladder (PAL)

All Permanent Access Ladder (PAL) to be designed, constructed and installed in accordance with AS 1657. Nominated subcontractor to provide details of proposed proprietary product prior to fabrication or installation for approval by height safety consultant.

Cable Lanyard (LAN)

Permanent stainless steel cable lanyard to be installed at designated access points where adjacent anchorage exceeds 600mm to provide appropriate attachment to fall prevention system at transition point.

Permanent Ladder Platform (PLP)

All Permanent Ladder Platforms (PLP) to be level, align vertically with LAB and be located at a horizontal to vertical ratio of 1:4. Minimum size to be 1000mm x 1000mm. Nominated subcontractor to provide details of proposed proprietary product prior to fabrication or installation for approval by height safety consultant.

Roof Access Hatch (RAH)

All Roof Access Hatches (RAH) to be lockable, include gas struts for support mechanism and open away from fall hazard. All RAH requiring access via ceiling to have trafficable support over ceiling for safe access/egress. All RAH to have APFA within 600mm to allow attachment prior to egress.

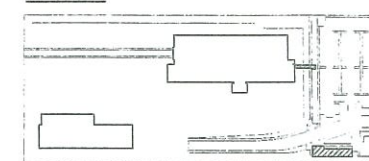
Signage (SGN)

All signage (SGN) to be in accordance with AS 1319 - Safety signs for the occupational environment, including the following - General Layout: To be based on "prohibition sign 403 - No pedestrian access" (from Table B1, p 25, AS 1319-1994) Function: Regulatory - Prohibition Type: Combination - Composite Material: Weather-proof metal, embossed or engraved, able to be permanently glued or bolted/screwed. Dimensions: Overall (Minimum) Size: 180mm x 220mm. Major letter size: 14mm, Minor letter size: 8mm, Symbol size: 162mm. Colour: Black text on a white background with red circle & slash. Contractor to further provide all signage in accordance with manufacturer's recommendations, including specification tag for each anchor point.

Portable Ladder Storage (PLS)

All portable ladder storage unit to include provision of both portable ladder and permanent storage brackets. Portable ladder to be aluminium unless otherwise noted and comply with AS 1892-2006, with length suitable such that it extends 1000mm above step-off point in functional position. Ladder storage brackets to be finished in aluminium unless otherwise noted, to be fixed with rubber on internal face to prevent vibration, and include provision for locking device (pad-lock keyed to facility manager requirements by others).

KEY PLAN



GENERAL NOTES

Installed Fall Injury Prevention Equipment (FIPS)
All installed FIPS equipment to comply with AS/NZS 1891 (set), and be installed in accordance with manufacturer's recommendations.

Multi purpose fall prevention anchors for use with temporary static line equipment to accommodate 24kN.

Single use fall prevention anchors for use with temporary ancillary equipment to accommodate 21kN.

Permanent static line end anchorages to accommodate 24kN and intermediate cable anchorages to accommodate 12kN minimum.

All anchorages, equipment and plant to be located a minimum of 3000mm from the fall hazard.

Installed Access Equipment

All fixed ladders, stairways and platforms to comply with AS 1657.

All roof access hatches, doorways and panels to open away from the fall hazard, be locked at all times and be restricted to authorized personnel. Restricted access signage to be located at all designated access points and where opening in proximity to a fall hazard have an anchor point or static line located within 600mm.

General

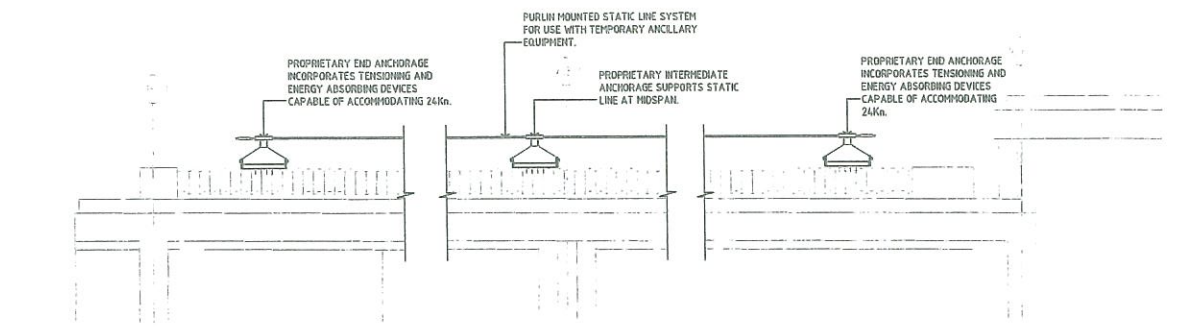
All fragile roofing to comply with requirements of OSH Regulations (1995).

Temporary equipment ensuring safe system of work to be used for all work: at height where permanent FIPS is not available or has not been provided.

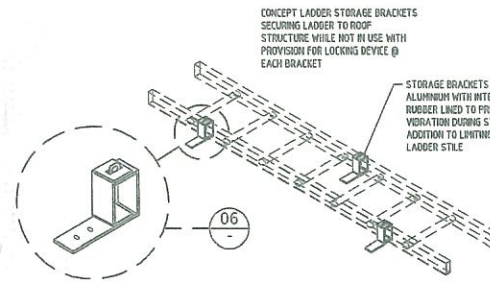
Contractor to comply at all times with the requirements of the Occupational Safety and Health Act (1904) and Regulations (1995), as amended.

LEGEND

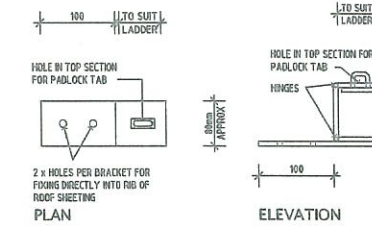
+	FALL PREVENTION ANCHORAGE (FPA)	---	HORIZONTAL STATIC LINE
+	PRIMARY ABSEIL FPA	---	VERTICAL STATIC LINE
+	PRIMARY MULTI FPA	---	LADDER ACCESS BRACKET
+	PRIMARY SINGLE FPA	---	PERMANENT ACCESS LADDER
+	PRIMARY ACCESS FPA	---	PERMANENT LADDER RUNGS
+	PRIMARY END FPA	---	PERMANENT LADDER PLATFORM
+	PRIMARY INTERMEDIATE FPA	---	ROOF ACCESS HATCH
+	SECONDARY DIVERSION FPA	---	SIGNAGE
+		---	PORTABLE LADDER & STORAGE UNIT



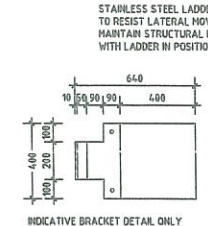
04 HORIZONTAL STATIC LINE
SCALE 1:10



05 PORTABLE LADDER STORAGE
SCALE 1:10

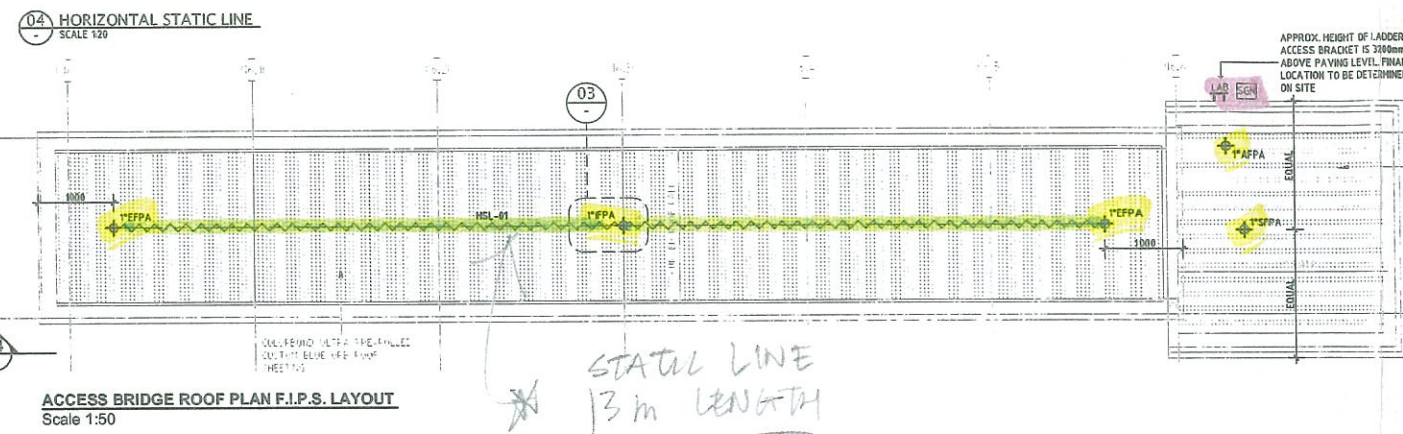


06 PORTABLE LADDER STORAGE BRACKET
SCALE 1:10

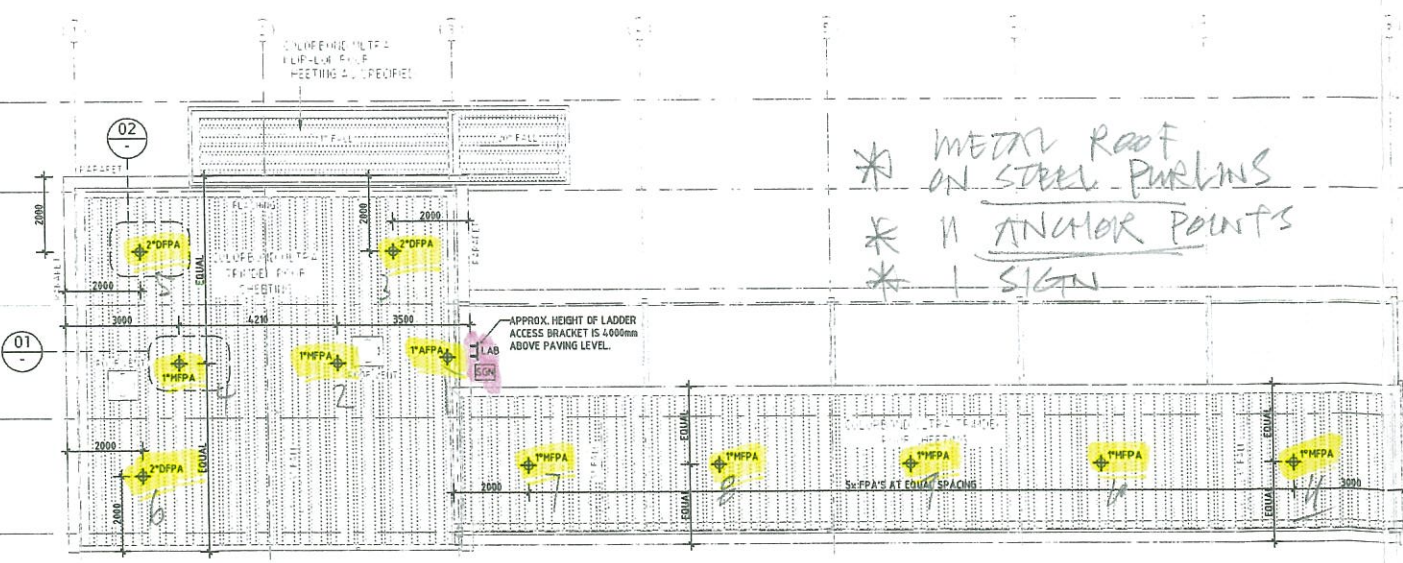


07 LADDER ACCESS BRACKET
SCALE 1:10

08 PERMANENT ACCESS LADDER
SCALE 1:10



ACCESS BRIDGE ROOF PLAN F.I.P.S. LAYOUT
Scale 1:10



GUARD HOUSE ROOF PLAN F.I.P.S. LAYOUT
Scale 1:10

No	DATE	REVISION RECORD	DL	REC	APP
E	31.07.07	ISSUED FOR TENDER	-	-	-

HEIGHT SAFETY CONSULTANT
Safetylink
RISK MANAGEMENT
T: (08) 9287 4230 F: (08) 9287 4220
P: Unit 2/454 Roberts Road Subiaco W.A. 6008
E: admin@safetylink.com.au
W: www.safetylink.com.au
ABN: 86 075 537 576

CONSULTANT
HASSELL LIMITED ACN 007 711 435
PODIUM LEVEL, CENTRAL PARK, 152-158 ST GEORGES TCE,
PERTH WA AUSTRALIA 6000
PERTH@HASSELL.COM.AU
T 61 8 9288 8500 F 61 8 9322 2330

HASSELL

SUBMARINE MAINTENANCE
FACILITY
HENDERSON WA

DRAWING TITLE
ACCESS BRIDGE & GUARD HOUSE
FALL INJURY PREVENTION SYSTEM
ROOF PLANS & DETAILS



WorleyParsons
Projects
INDUSTRIAL & INFRASTRUCTURE
LEVEL 6 QV1 250 St Georges Terrace
Perth Western Australia 6000
Telephone +61 (08) 9278 8111
Facsimile +61 (08) 9278 8110
Web: www.worley.com.au
WorleyParsons Services Pty Ltd
ABN 61 001 279 012

APPROVED	DES BS
DATE JULY 2006	DRN DL
SCALE AS SHOWN	OKD RC
DWG NO 302-10812-A-691	REV E